

LD 390

Synonym: 7-(dimethylamino)-4-methoxy-1-methyl-1,8-naphthyridin- 2(1H)-one; Quinolon 390

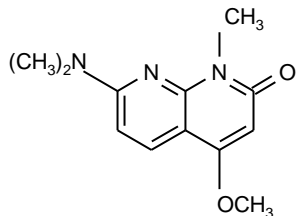
Catalog No.: 03900

CAS No.: 57980-10-6

Chemical Name: C₁₂H₁₅N₃O₂ **MW:** 233.27

Appearance: White crystalline powder

Structure:

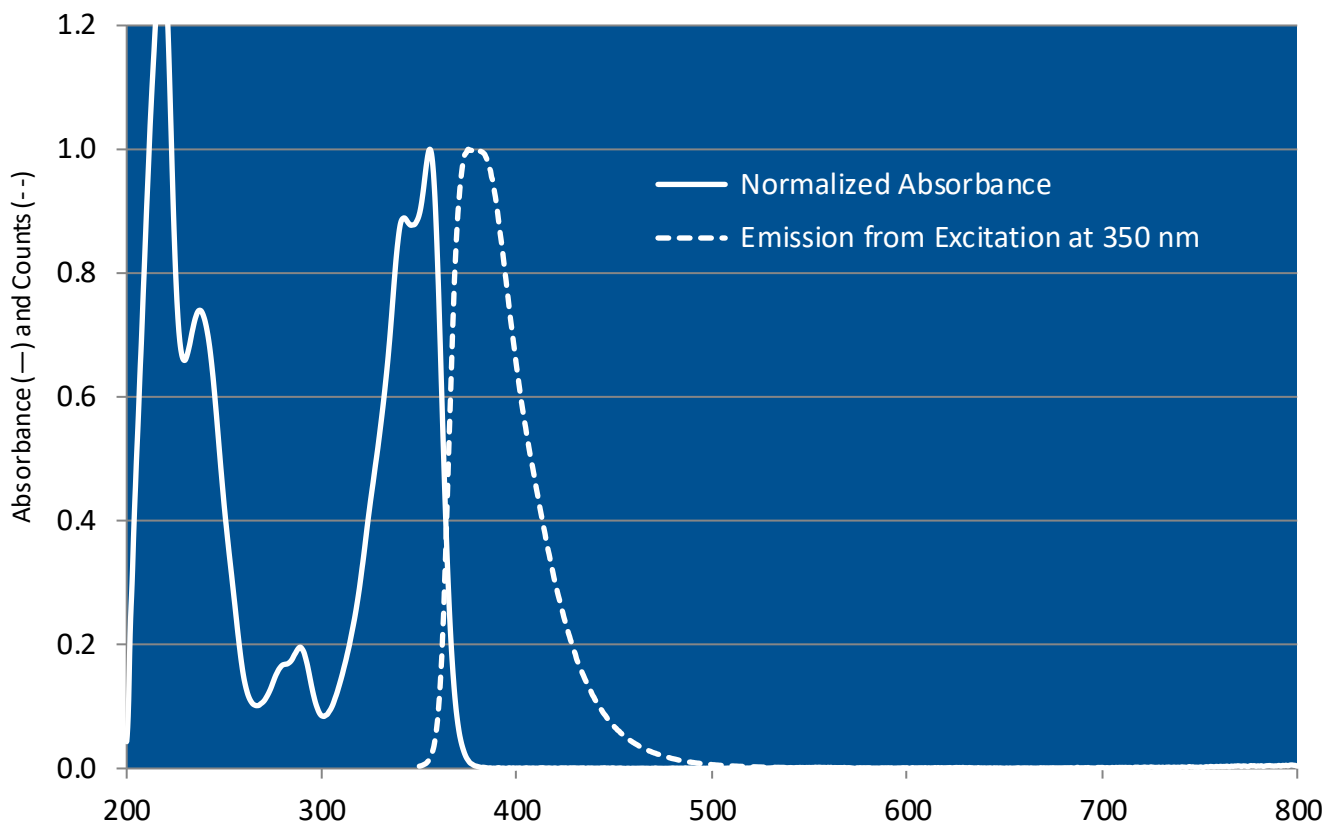


Lasing Wavelength Max. (nm)	Range (nm)	Pump Source (nm)	Solvent	Concentration (molar)	Abs λ-max	FI λ-max
	389-397	FL ⁸	Methanol		355 ^m	386 ^m
391	388-395	FL ⁸	Ethanol		355 ^e	
394	383-408	FL ⁶⁹	Methanol			
389	378-398	Nd:YAG(355) ⁸⁶	Ethanol	1.6 x 10 ⁻³ (osc), 2.4 x 10 ⁻⁴ (amp)		
390	383-396	Nd:YAG(355) ⁵⁷	Methanol	1.1 x 10 ⁻³ (osc), 2.6 x 10 ⁻⁴ (amp)		
389	381-401	N ₂ (337) ¹³⁹	Methanol	1.5 x 10 ⁻³		
404	-400-420-	N ₂ (337) ¹³⁹	Methanol	1.5 x 10 ⁻³ (LD390)+ 4.5 x 10 ⁻⁴ (S420)		

e = ethanol; m = methanol

S420 = Stilbene 420

LD 390 in Methanol



The information presented above is believed to be accurate but is not a specification. The customer is fully responsible for determining the suitability of this product for use in their application. Exciton, Inc. does not represent that the information is sufficient or complete for any specific application.

Quantum Yields and Lifetimes

Absorbance (nm)	Emission (nm)	Quantum Yield (max = 1.0)	Solvent	Lifetime (ns)	References, Notes
355		0.52	Ethanol		C-5
357		0.65	DMF		C-5

REFERENCES:

8. Near-Ultraviolet Lasing Dyes, Part 1: Search for New Dyes and Summation of Results, P.R. Hammond, A.N. Fletcher, R.A. Henry, R.L. Atkins and D.W. Moore; and Near-Ultraviolet Lasing Dyes, Part 2: Effects of Coaxial Flashlamp Excitation, A.N. Fletcher, *NWC TP5768* (1975); Laser Dye Stability, Part 3: Bicyclic Dyes in Ethanol, A.N. Fletcher, *Appl. Phys.*, 14, 295 (1977); Laser Dye Stability, Part 5: Effect of Chemical Substituents of Bicyclic Dyes Upon Photodegradation Parameters, A.N. Fletcher and D.E. Bliss, *Appl. Phys.*, 16, 289 (1978)
57. Quanta-Ray, Note: Quanta-Ray is now incorporated as a part of Spectra-Physics, 1250 W. Middlefield Road, Mountain View, CA 94039
69. Candela Laser Corporation, 530 Boston Post Road, Wayland, MA 01778-1833
86. L. Johnson and G. Holtom, private commun., 1981
139. Nitrogen Pumping LD390 and a mixture of LD390 and S420, J.P. Young, private commun., 1983



2150 Bixby Road
Lockbourne, OH 43137
Tel: 614.492.5610
E-mail: info.exciton@luxotticaretail.com
www.exciton.luxottica.com

C-5. Laser Dye Stability. Part 5, Effect of Chemical Substituents of Bicyclic Dyes Upon Photodegradation Parameters, A.N. Fletcher and D.E. Bliss, Appl. Phys. 16, 289 (1978), <https://doi.org/10.1007/BF00885124>

For a current list of biology, biological stain, or biochemistry references for LD 390 from PubMed, click on the following link:

[LD 390](#) (zero references as of May 2006)