

## LD 425

**Synonym:** 4-methyl-7-(4-morpholinyl)-2H-pyrano[2,3-b]pyridin-2-one

**Catalog No.:** 04250

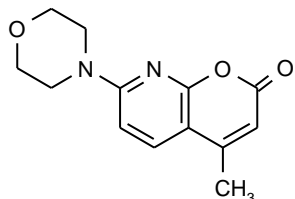
**CAS No.:** 57980-07-1

**MW:** 246.26

**Chemical Formula:** C<sub>13</sub>H<sub>14</sub>N<sub>2</sub>O<sub>3</sub>

**Appearance:** White crystals

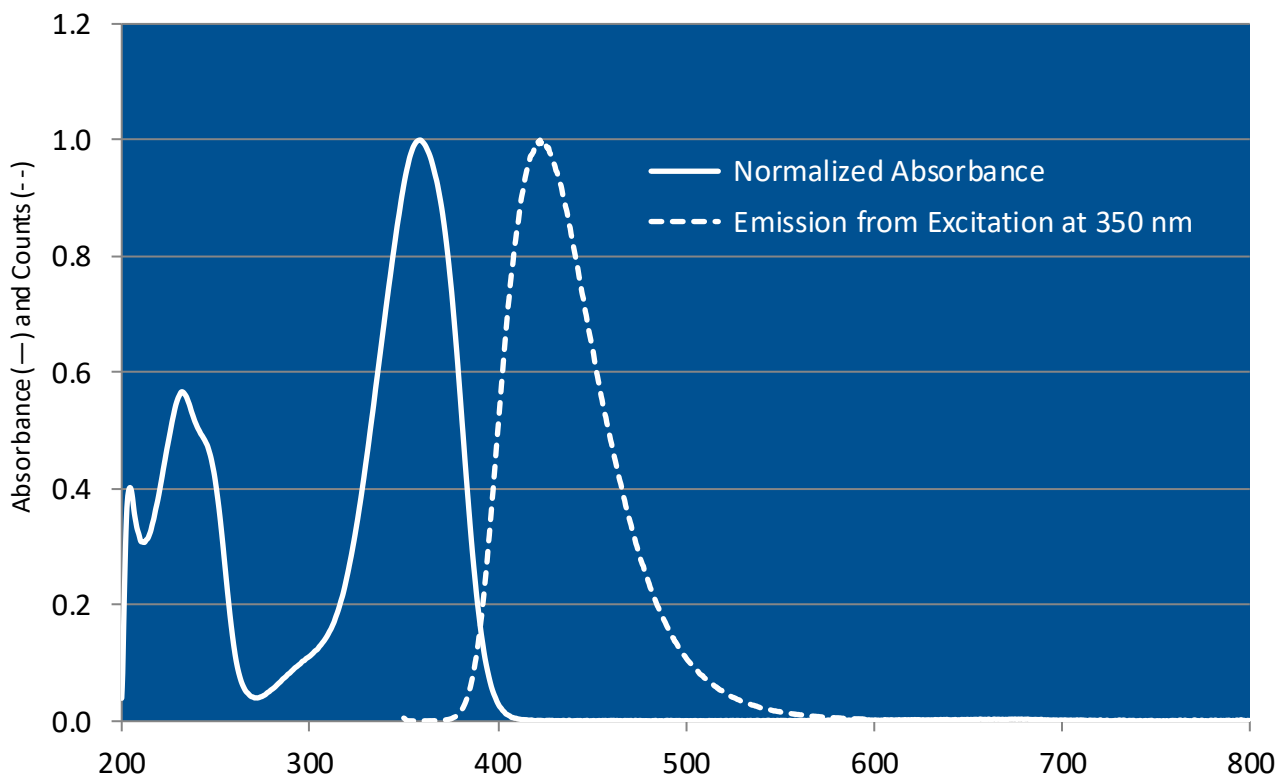
**Structure:**



Max. Lasing Wavelength (nm)	Range (nm)	Pump Source (nm)	Solvent	Concentration (molar)	Abs λ-max	FI λ-max
425	405-465	FL <sup>8</sup>	Ethanol		357 <sup>e</sup>	427 <sup>e</sup>
431	419-440	FL <sup>3</sup>	Methanol + 1% LO	2 x 10 <sup>-4</sup>		
412	404-425	N <sub>2</sub> (337) <sup>9</sup>	p-Dioxane	7.5 x 10 <sup>-3</sup>		
427	417-444	N <sub>2</sub> (337) <sup>9</sup>	Ethanol	7.5 x 10 <sup>-3</sup>		

e = ethanol

### LD 425 in Methanol



The information presented above is believed to be accurate but is not a specification. The customer is fully responsible for determining the suitability of this product for use in their application. Exciton, Inc. does not represent that the information is sufficient or complete for any specific application.

**Quantum Yields and Lifetimes**

Absorbance (nm)	Emission (nm)	Quantum Yield (max = 1.0)	Solvent	Lifetime (ns)	References, Notes
358		0.54	Ethanol		C-5

**REFERENCES:**

3. Phase-R Corporation, Box G-2 Old Bay Rd., New Durham, NH 03855
8. Near-Ultraviolet Lasing Dyes, Part 1: Search for New Dyes and Summation of Results, P.R. Hammond, A.N. Fletcher, R.A. Henry, R.L. Atkins and D.W. Moore; and Near-Ultraviolet Lasing Dyes, Part 2: Effects of Coaxial Flashlamp Excitation, A.N. Fletcher, *NWC TP5768* (1975); Laser Dye Stability, Part 3: Bicyclic Dyes in Ethanol, A.N. Fletcher, *Appl. Phys.*, 14, 295 (1977); Laser Dye Stability, Part 5: Effect of Chemical Substituents of Bicyclic Dyes Upon Photodegradation Parameters, A.N. Fletcher and D.E. Bliss, *Appl. Phys.*, 16, 289 (1978)
9. A. Williamson, private commun., 1977
- C-5. Laser Dye Stability. Part 5, Effect of Chemical Substituents of Bicyclic Dyes Upon Photodegradation Parameters, A.N. Fletcher and D.E. Bliss, *Appl. Phys.* 16, 289 (1978), <https://doi.org/10.1007/BF00885124>

For a current list of biology, biological stain, or biochemistry references for LD 425 from PubMed, click on the following link:

[LD 425](#) (zero references as of May 2006)