

LD 466

Synonym: 7-(diethylamino)-2H-1-benzopyran-2-one; Coumarin 466

Catalog No.: 04660

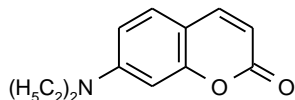
CAS No.: 20571-42-0

MW: 217.26

Chemical Formula: C₁₃H₁₅NO₂

Appearance: Yellow-white crystalline powder

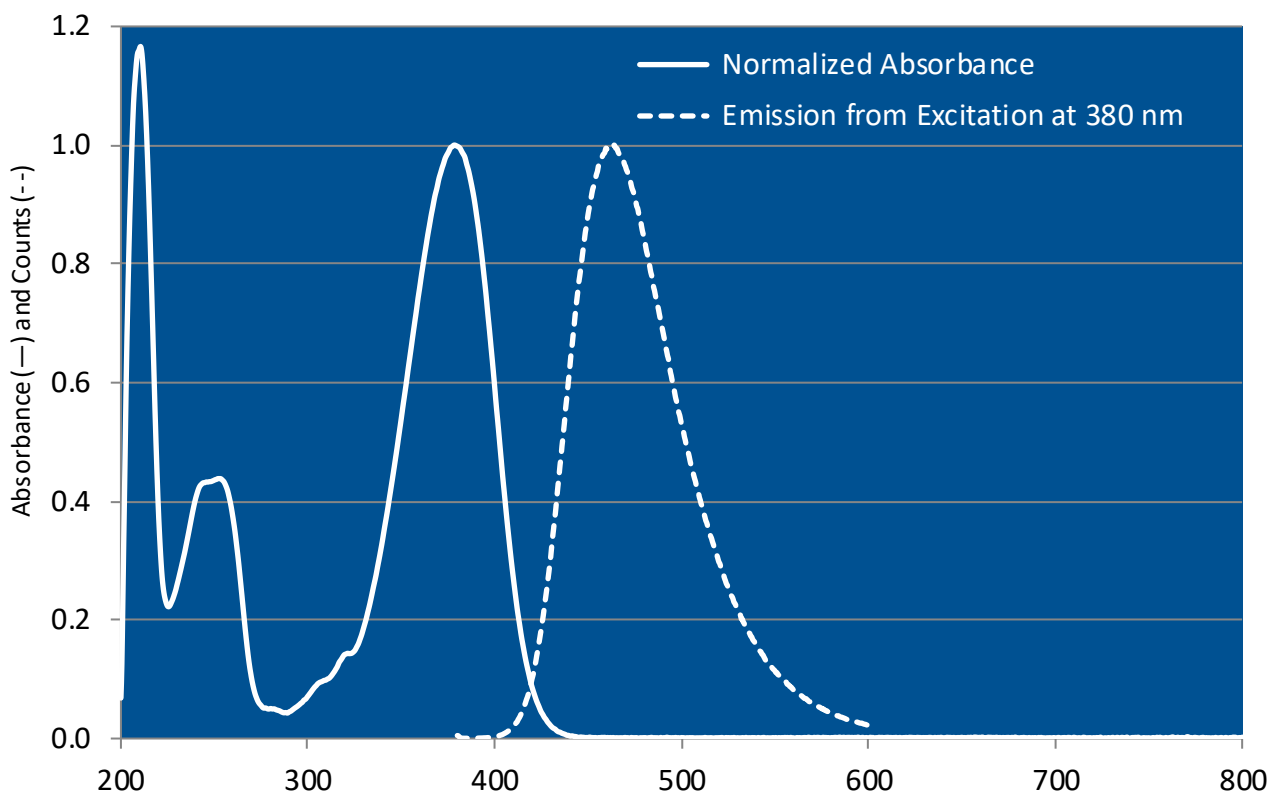
Structure:



Max. Lasing Wavelength (nm)	Range (nm)	Pump Source (nm)	Solvent	Concentration (molar)	Abs λ-max	Fl λ-max
466		FL ¹⁸	Ethanol		368 ^m	463 ^m
474	462-490	FL ³	Methanol + LO	8 x 10 ⁻⁵		
470	449-505	XeCl(308) ¹¹⁰	Methanol	2.5 x 10 ⁻³		
470	450-495	XeCl(308) ¹⁴⁶	Methanol	5.4 x 10 ⁻³ (osc), 1.9 x 10 ⁻³ (amp)		
462	450-485	Nd:YAG(355) ¹⁰⁹	Ethanol	1 x 10 ⁻³		
465	446-500	Nd:YAG(355) ¹¹⁰	Methanol	5 x 10 ⁻⁴		
467	459-477	Nd:YAG(355) ⁵⁴	Ethanol	2.5 x 10 ⁻⁴		
472	450-501	Nd:YAG(355) ¹⁰³	Methanol	8.3 x 10 ⁻⁴ (osc), 3.4 x 10 ⁻⁴ (amp)		
464	446-492	N ₂ (337) ⁹	p-Dioxane/EtOH,5/3	7.5 x 10 ⁻³		
465	-452-480-	N ₂ (337) ⁹	Ethanol			

m = methanol

LD 466 in Methanol



The information presented above is believed to be accurate but is not a specification. The customer is fully responsible for determining the suitability of this product for use in their application. Exciton, Inc. does not represent that the information is sufficient or complete for any specific application.

REFERENCES:

3. Phase-R Corporation, Box G-2 Old Bay Rd., New Durham, NH 03855
9. A. Williamson, private commun., 1977
18. New Laser Dyes with Blue-Green Emission, E.J. Schimitschek, J.A. Trias, P.R. Hammond, R.A. Henry and R.L. Atkins, *Optics Commun.*, 16(30), 313 (1976)
54. W. R. Green, private commun., 1977
103. B. Rockney, private commun., 1979
109. Tuning Ranges of 355 nm Pumped Dyes from 410-715 nm, D.M. Guthals and J.W. Nibler, *Optics Commun.*, 29(3), 322 (1979)
110. Lumonics Inc., 105 Schneider Road, Kanata, (Ottawa), Ontario, Canada K2K 1Y3
146. Excimer (308) Pumped LD466, N. Presser, private commun., 1985. LD-466 gives as much output as Coumarin 480

For a current list of biology, biological stain, or biochemistry references for LD 466 from PubMed, click on the following link:

[LD 466 or Coumarin 466](#) (zero references as of May 2006)